

Power RICH System[®] - **WebView**

WebView is a client that was developed specifically for applications that require a large number of users to access real-time and historical data. Users view the current values of data in a tabular format (not graphical) and Historical Trend data in a chart format from any web browser. Adding the WebView webserver option to a *Power RICH System*[®]-**Enterprise Edition** allows any number of users to have access if they have Read privileges in the system.

If additional devices are added to the *Power RICH System*[®]-**Enterprise Edition** database, they are automatically updated and displayed in WebView. Simple configuration fields determine what data is viewable and how the data is presented. The format is easily changed by a system administrator.

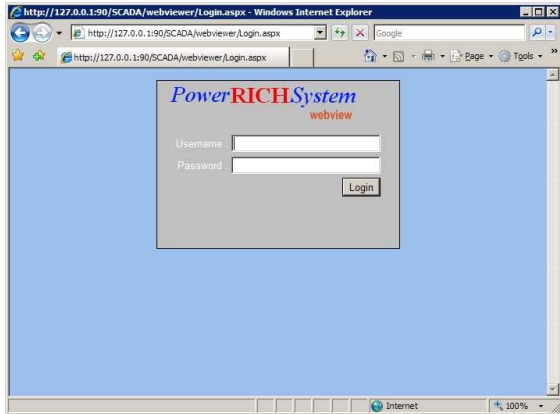
All analog values are presented with Point Name, formatted value, and units. Digital Points display the Current State Description (Closed, Tripped, etc). Any point that has History turned on will have a Trend Icon that allows access to historic trend data via a charting tool. Users can select the trend time and scaling.

When the users go to the Website, they are presented with a Log On screen (See below). Then the users are presented with webpage that lists the Devices / Sites they have security to Read. Devices shown in a Tree view and when the user clicks on a device, the database is queried for that device's current values. The values can be refreshed by clicking the Refresh Button in the Browser.

Trend data is accessed by simply clicking on the trend icon next to the values. A larger trend icon allows the user to look at a trend chart with all of the values in the group (See Trends below). The user can look at Raw Historic data (all samples in the Historian) or they can look at Historical Views, such as 1 hour averages or 24 hours Maximum values.

WebView uses Microsoft IIS webserver that supports SSL and encryption on the webserver.

Log in screen



Device page

The screenshot displays the "Device page" for the Orlando station. The page is titled "PowerRICH System webview" and includes a "Logout" button for the user "admin". On the left, a tree view shows the hierarchy: USA > America > Flori > Gainesville > Orlando. The main content area shows real-time data for the Orlando station as of 6/10/2009 1:35:08 PM. The data is organized into several sections:

- Outstation:** Outstation: Healthy, Multidrop [Good], 4/22/2009 3:58:56 AM
- Voltage:** Hz: 59.98 Hz; V1: 36484 Volts; V2: 36543 Volts; V3: 36563 Volts
- Current:** Delta: 2.00 feet; I1: 66.69 Amps; I2: 67.00 Amps; I3: 66.56 Amps
- Demand:** kVar Demand: 938 kVar; kW Demand: 0 kW
- Total Harmonic Distortion:** I1 THD: 144.5%; I2 THD: 144.5%; I3 THD: 144.6%; V1 THD: 2.9%; V2 THD: 3.0%; V3 THD: 3.0%
- Power:** PF: -1 PF; kVA 3 Phase: 3922 kVA; KVAR 3 Phase: 851 kVar; kW 3 Phase: -3829 kW
- Energy:** kWhr EXPORT: 33474987 kWhr; kWhr IMPORT: 0 kWhr; kWhr Net: 7018515 kWhr; kWhr Total: 387 kWhr

Each data point includes a small icon for viewing a trend or history graph. The browser window shows the URL `http://127.0.0.1:90/SCADA/webviewer/Default.aspx`.

Trends

